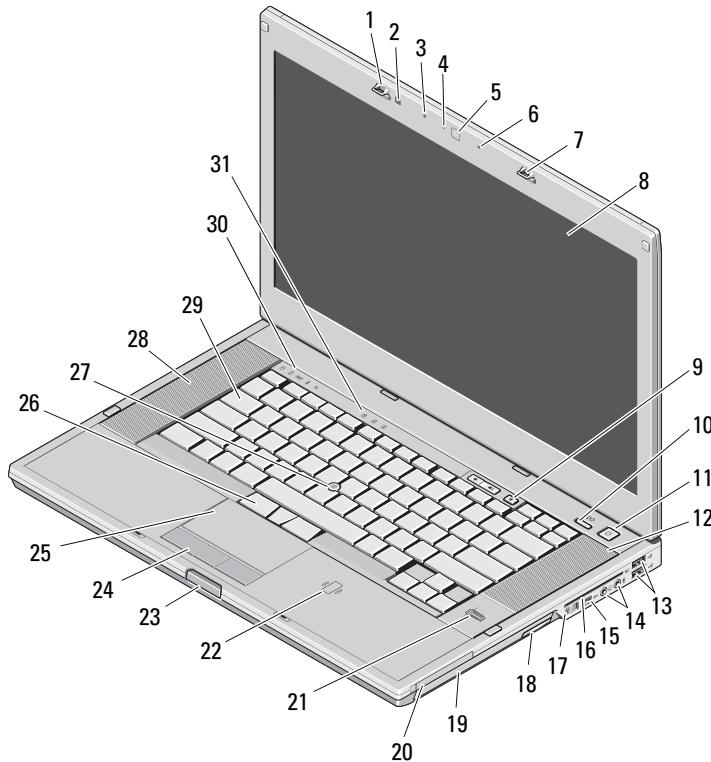


Dell Precision™ Mobile Workstation M4500

Setup and Features Information

Front View



- | | | | |
|----|-------------------------------|----|--|
| 1 | display latch | 2 | ambient light sensor |
| 3 | microphone | 4 | camera LED (optional) |
| 5 | camera (optional) | 6 | microphone |
| 7 | display latch | 8 | display |
| 9 | volume control buttons | 10 | Precision ON™ button |
| 11 | power button | 12 | right speaker |
| 13 | USB 2.0 connectors (2) | 14 | audio connectors |
| 15 | IEEE 1394 connector | 16 | smart card slot |
| 17 | wireless switch | 18 | optical drive removal button |
| 19 | optical drive | 20 | PC card slot |
| 21 | fingerprint reader (optional) | 22 | contactless smart card reader (optional) |
| 23 | display latch release button | 24 | touchpad buttons |
| 25 | touchpad | 26 | trackstick buttons |
| 27 | trackstick | 28 | left speaker |
| 29 | keyboard | 30 | device status lights |
| 31 | keyboard status lights | | |

About Warnings



WARNING: A WARNING indicates a potential for property damage, personal injury, or death.



Regulatory Model: PP30LA

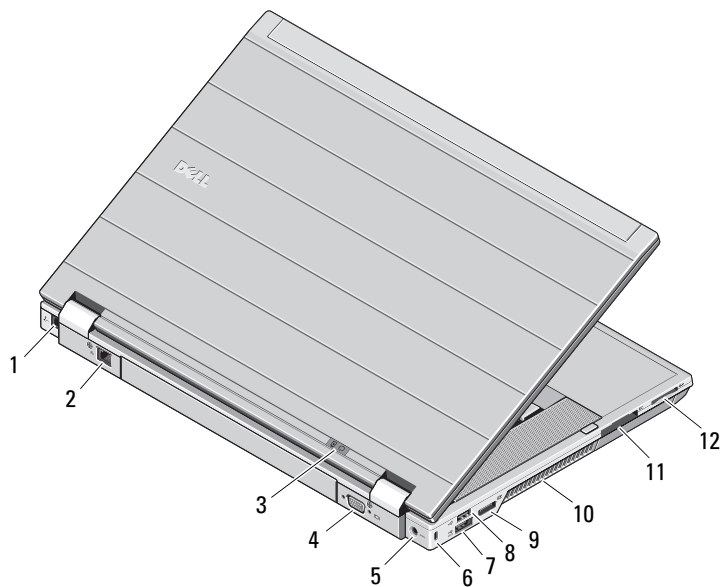
Regulatory Type: PP30LA001

February 2010



OPHRV5A00

Back View



- 1 modem connector (optional)
- 2 network connector
- 3 power and battery status lights
- 4 video connector (VGA)
- 5 AC adapter connector
- 6 security cable slot
- 7 eSATA/USB 2.0 connector
- 8 USB 2.0 connector
- 9 multimode DisplayPort connector
- 10 cooling vent
- 11 ExpressCard slot
- 12 Secure Digital (SD) and MMC card slot



WARNING: Do not block, push objects into, or allow dust to accumulate in the air vents. Do not store your Dell computer in a low-airflow environment, such as a closed briefcase, while it is running. Restricting the airflow can damage the computer or cause a fire. The computer turns on the fan when the computer gets hot. Fan noise is normal and does not indicate a problem with the fan or the computer.

Quick Setup



WARNING: Before you begin any of the procedures in this section, read the safety information that shipped with your computer. For additional best practices information, see www.dell.com/regulatory_compliance.



WARNING: The AC adapter works with electrical outlets worldwide. However, power connectors and power strips vary among countries. Using an incompatible cable or improperly connecting the cable to the power strip or electrical outlet may cause fire or equipment damage.



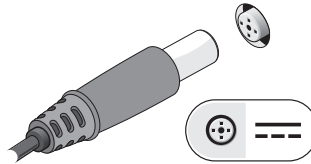
CAUTION: When you disconnect the AC adapter cable from the computer, grasp the connector, not the cable itself, and pull firmly but gently to avoid damaging the cable. When you wrap the AC adapter cable, ensure that you follow the angle of the connector on the AC adapter to avoid damaging the cable.



NOTE: Some devices may not be included if you did not order them.

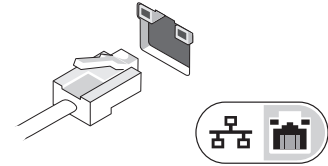
1

Connect the AC adapter to the AC adapter connector on the portable computer and to the electrical outlet.



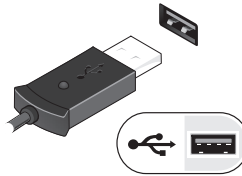
2

Connect the network cable (optional).



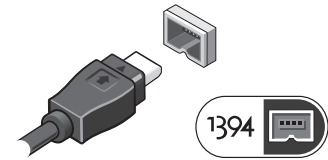
3

Connect USB devices, such as a mouse or a keyboard (optional).



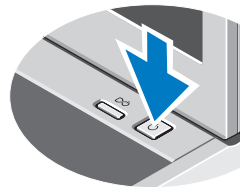
4

Connect IEEE 1394 devices, such as a DVD player (optional).



5

Open the computer display and press the power button to turn on the computer.



NOTE: It is recommended that you turn on and shut down your computer at least once before you install any cards or connect the computer to a docking device or other external device, such as a printer.

Specifications



NOTE: Offerings may vary by region. For more information regarding the configuration of your computer, click **Start**→**Help and Support** and select the option to view information about your computer.

System Information

Processor type	Intel® i5 and i7 Dual Core Intel Core i7 Quad Extreme Intel Core i7 Quad
Chipset	Mobile Intel 5 series chipset (QM57)

Video

Video type	Discrete
Data bus	<ul style="list-style-type: none">• PCI-E x16 Gen1• PCI-E x16 Gen2
Video controller	NVIDIA Quadro FX 880M NVIDIA Quadro FX 1800M

Memory

Type	DDR3, 1066 MHz / 1333 MHz
Memory module connector	two SODIMM slots
Memory module capacity	1 GB or 4 GB
Minimum memory	2 GB
Maximum memory	8 GB

Contactless Smart Card

Supported Smart Cards and Technologies	ISO14443A — 106 kbps, 212 kbps, 424 kbps, and 848 kbps ISO14443B — 106 kbps, 212 kbps, 424 kbps, and 848 kbps ISO15693 HID iClass FIPS201 NXP Desfire
--	--

Battery

Type	6-cell "smart" lithium ion (60 WHr) 9-cell "smart" lithium ion (81 WHr) 9-cell "smart" lithium ion (90 WHr)
------	---

Dimensions

6-cell	
Depth	206.00 mm (8.11 inches)
Height	19.80 mm (0.78 inch)
Width	47.00 mm (1.85 inches)
9-cell	
Depth	208.00 mm (8.18 inches)
Height	22.30 mm (0.87 inch)
Width	69.00 mm (2.71 inches)

Weight

6-cell	329.00 g (0.72 lb)
9-cell	485.00 g (1.07 lb)

Voltage	11.10 V
---------	---------

Battery (continued)

Temperature range

Operating	0 °C to 35 °C (32 °F to 95 °F)
Storage	-40 °C to 60 °C (-40 °F to 140 °F)

Coin-cell battery 3 V CR2032 lithium coin cell

AC Adapter

Input voltage 100 V–240 V ~

Input current (maximum) 1.50 A or 2.50 A

Input frequency 50 Hz–60 Hz

Output power 130 W

Output current 6.70 A (maximum at 4-second pulse)

Rated output voltage 19.50 VDC

Dimensions

Depth	25.40 mm (1.00 inch)
Height	76.20 mm (2.99 inches)
Width	154.70 mm (6.09 inches)

Temperature range

Operating	0 °C to 35 °C (32 °F to 95 °F)
Storage	-40 °C to 65 °C (-40 °C to 149 °F)

Physical

Depth	253.30 mm (9.97 inches)
Height	27.60 mm (1.08 inches)
Width	374.30 mm (14.73 inches)
Weight (minimum)	2.81 kg (6.20 lb)

Docking Connector

E-Family dock 144-pin docking connector

Environmental

Temperature range

Operating	0 °C to 35 °C (32 °F to 95 °F)
Storage	-40 °C to 65 °C (-40 °F to 149 °F)

Relative humidity
(maximum)

Operating	10% to 90% (noncondensing)
Storage	5% to 95% (noncondensing)

Altitude (maximum)

Operating	-15.20 m to 3048 m (-50 ft to 10,000 ft)
Storage	-15.20 m to 10,668 m (-50 ft to 35,000 ft)

Finding More Information and Resources

See the safety and regulatory documents that shipped with your computer and the regulatory compliance website at www.dell.com/regulatory_compliance for more information on:

- Safety best practices
- Warranty
- Terms and Conditions
- Regulatory certification
- Ergonomics
- End User License Agreement

**Information in this document is subject to change without notice.
© 2010 Dell Inc. All rights reserved. Printed in the U.S.A.**

Reproduction of these materials in any manner whatsoever without the written permission of Dell Inc. is strictly forbidden.

Trademarks used in this text: *Dell*, the *DELL* logo, *Dell Precision*, and *Precision ON* are trademarks of Dell Inc.; *Intel* is a registered trademark and *Core* is a trademark of Intel Corporation in the U.S. and other countries.

Other trademarks and trade names may be used in this document to refer to either the entities claiming the marks and names or their products. Dell Inc. disclaims any proprietary interest in trademarks and trade names other than its own.